



**BACHELOR  
OF SCIENCE  
IN NURSING**  
Program Launch





**Together**, we can fulfill the vision to prepare nurses who are not only highly skilled but also spiritually grounded, holistically nurtured, and resilient against professional burnout — ready to serve with compassion and excellence in a rapidly changing healthcare landscape.



## Program Launch for Bachelor of Science in Nursing

At Asbury University, we have a longstanding commitment to fostering an environment that is distinctively Christian, student-focused, and dedicated to whole-person flourishing.

Over the past 25 years, we have prepared students for the nursing profession through our pre-nursing undergraduate focus, equipping them to transition into nursing programs at other universities to complete their degree. However, many of our students expressed the desire to complete their education within our supportive community.

The demand for nurses has reached critical levels, both across Kentucky and nationwide. Meeting this need requires not only attracting applicants to a high-quality nursing program but also equipping them with the support and resources to excel in their studies.

With our commitment to the care and development of the whole person, our belief that humans are created in God's image, and our knowledge of the ongoing nursing shortage, Asbury University is launching a Bachelor of Science in Nursing (BSN) program.



## A Critical Need

According to the American Association of Colleges of Nursing, nursing schools in the United States turned away over 65,000 qualified applications from baccalaureate and graduate nursing programs in 2023 due to an insufficient number of faculty, clinical sites, classroom space, clinical preceptors and budget dollars.

Nearly 4,000 RN positions remain unfilled in Kentucky hospitals, while 11% of RNs currently employed in those hospitals are nearing retirement.



## 7,562 MISSED OPPORTUNITIES

This is the number of prospective undergraduate students with an interest in nursing who inquired at Asbury over the last four years who ultimately did not apply to the University.

---

**“After graduation, I want to use my nursing major  
in mission work to spread the love of Jesus.”**

— *Karis '28, Pre-Nursing major*

---

## The Asbury Difference

- At Asbury, our year-over-year student retention rate is consistently robust. We can address the nationally recognized issue of poor nursing program completion rates by doing what we do best: supporting students from matriculation through graduation.
- Strategic partnerships with local employers ensure graduates possess real-world competencies, career experience, and robust job placement opportunities.
- Our BSN curriculum includes studies in the natural, behavioral, and social sciences; humanities; and nursing sciences. Graduates will be well-rounded generalist nurses eligible to take the National Council Licensure Examination.





**“We strive for academic excellence because nursing is both a science and an art, requiring our students to be deeply knowledgeable and highly skilled. Also, we recognize the importance of spiritual vitality. By mentoring students in their walk with Christ, we help them approach nursing as a calling, fostering resilience, compassion, and purpose that sustain a lifetime of holistic and evidence-based professional nursing care.”**

*— Dr. Connie Lamb, RN, CNE, CHSE, nursing program administrator*

## **Asbury Nursing Grads will ...**

- 1** Demonstrate critical thinking by making sound clinical judgments that reflect the integration of nursing science, evidence-based practice, liberal arts knowledge, and a biblical worldview.
- 2** Provide compassionate, culturally competent, holistic, person-centered nursing care across the lifespan in various settings.
- 3** Improve population health across the healthcare continuum, from public health prevention to disease management, by promoting inclusive and equitable health outcomes for diverse populations.
- 4** Pursue knowledge and expertise through continued nursing practice, research, and community involvement to enhance spiritual and professional development.



# A Kingdom Legacy

Asbury University is experiencing a pivotal moment with the launch of this essential academic program. Our objective is to begin recruiting the first freshman students into the program for fall 2025 and have clinical labs completed by spring 2027. Attaining this ambitious goal necessitates the unwavering prayers and generous partnerships from our alumni, parents and friends. **We seek to raise \$4.5 million** in charitable funds to fulfill the financial requirements essential for the successful launch of the nursing program.

## FACILITY RENOVATION — \$3 million

Plans are underway to renovate the second floor of Hamann-Ray science building with classrooms, labs, technology, and faculty and staff offices.



## SIMULATION LABS AND EQUIPMENT — \$800,000

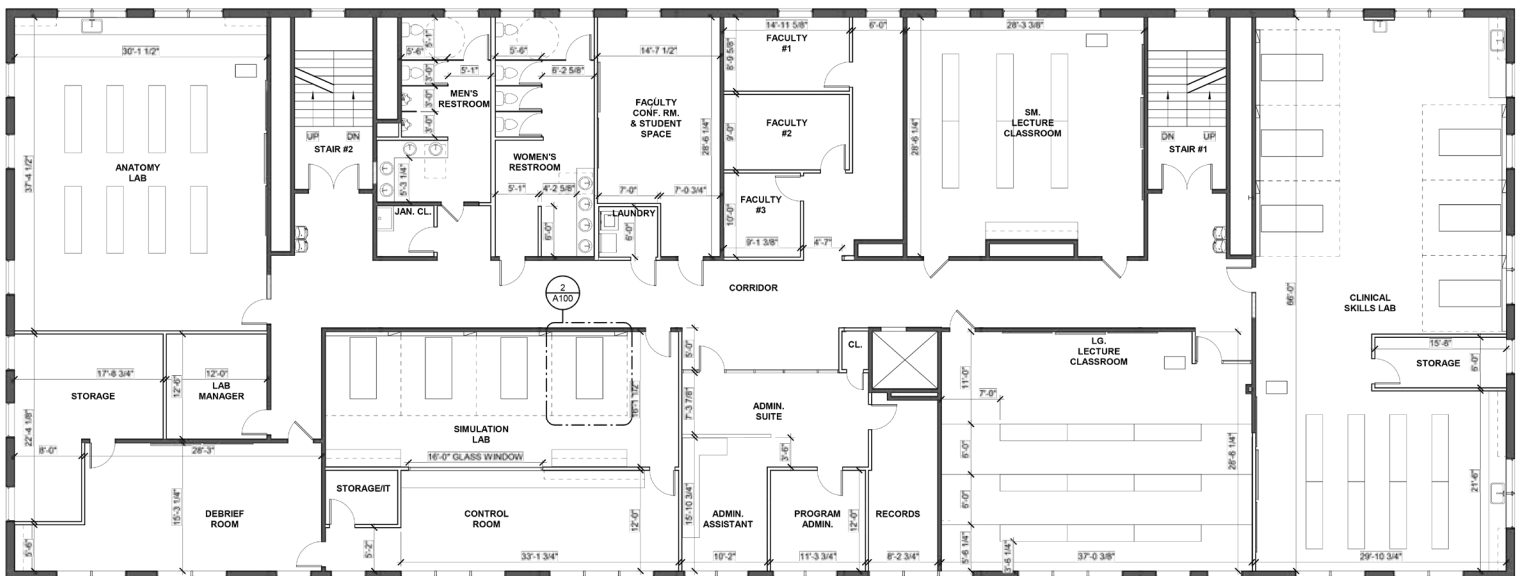
Our renovated training center will include a state-of-the-art simulation lab with high-fidelity manikins, clinical equipment, such as hospital beds and functional headwall units, and classroom furnishings.

## NURSING FACULTY AND STAFF — \$700,000

In addition to a director, the program requires clinically-trained nursing faculty, as well as academic and administrative support staff. This fund will pay launch-year salaries until the program is revenue positive.



## HAMANN-RAY REMODEL



## An Invitation

We invite you to prayerfully consider partnering with us to launch this new academic initiative. Your contribution will have a profound Kingdom impact as we prepare men and women to enter this vital profession. To maximize your support, contributions can be made over a three-year pledge period.

We would be honored to share with you ways to honor loved ones or your own legacy through naming opportunities in recognition of your partnership with us in this endeavor.

Asbury's Office of Advancement would be honored to come alongside you to explore tax-wise ways to make your gift to support this critical initiative.

### WAYS TO GIVE

- Cash
- Stocks
- Real Estate
- Other Non-Cash Assets\*

*\*If you are planning to sell your business, family farm, or vacation home, ask us about how you can do so with zero capital gains tax while benefiting Asbury University and the other ministries you love.*





# ASBURY UNIVERSITY

*Academic Excellence & Spiritual Vitality*

**Office of Institutional Advancement**

One Macklem Drive

Wilmore, KY 40390

(859) 858-5707

[advancement@asbury.edu](mailto:advancement@asbury.edu)